



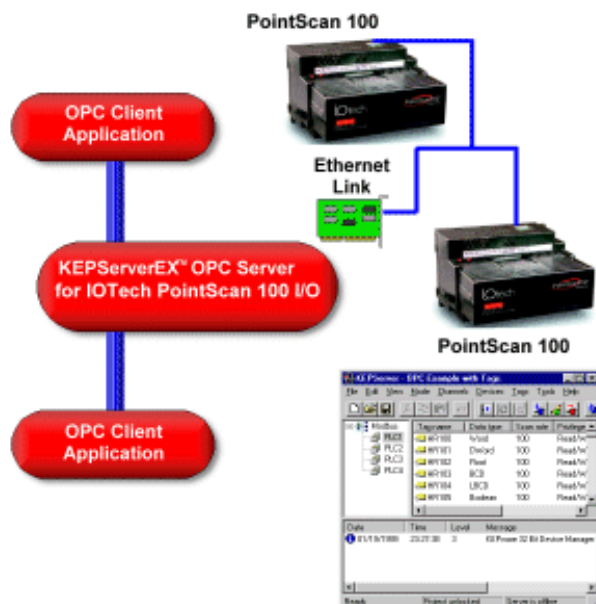
"THE WORLD LEADER IN COMMUNICATIONS FOR AUTOMATION!"

1-207-775-1660

IOtech PointScan 100 OPC Server

Kepware's IOtech PointScan 100 Ethernet I/O device driver works in conjunction with our OPC Server KEPServerEX, to provide data exchange between OPC Clients and PointScan Ethernet RTUs using Modbus OPEN UDP protocol. KEPServerEX automatically optimizes your data acquisition based on client demand. Data integrity is ensured with our extensive error handling.

The IOtech PointScan 100 Ethernet OPC Driver is also included in the Manufacturing Suite.



Plug-in Driver Features:

- Access Analog and Discrete I/O
- Access Discrete I/O in Bit, Byte, and Word formats for high speed updates
- Optimized Ethernet connection provides up to 154 read/write operations per second

Protocol

- Modbus Open Protocol over Ethernet using Winsock V1.1 or higher

Application Support

- OPC Data Access (OPC DA) Versions 1.0a, 2.0, 2.05a, 3.0
- OPC Alarms and Events (OPC AE) Version 1.10
- OPC Unified Architecture (OPC UA) Version 1.01
- OPC Express Interface (OPC Xi) Version 1.00
- SuiteLink and FastDDE for Wonderware
- NIO Interface for iFIX
- DDE Format CF_Text and AdvancedDDE

Supported Devices

- **IOtech PointScan 100 modules**
- **IOtech PointScan 200 modules** - connected through a PointScan 100 module

Additional Information and Resources:

- KEPServerEX OPC Server Features
- IOtech PointScan 100 Revision History
- KEPServerEX Revision History
- Connecting Visual Basic to IOtech PointScan 100
- System Requirements
- OPC Compliancy Testing
- KEPServerEX v5 Licensing
- Upgrade Pricing

Related Products:

- Manufacturing Suite
- LinkMaster OPC Bridging Software
- DataLogger Option for KEPServerEX
- Advanced Tag Option for KEPServerEX
- RedundancyMaster OPC Redundancy Software
- Support and Maintenance Agreement
- Support and Maintenance Agreement Pricing
- Legacy Pricing Policy

Drivers "Plug-in" to KEPServerEX

The IOtech PointScan 100 OPC Server is a plug-in device driver for KEPServerEX. A "Plug-in" is a software program (.dll) that extends the capabilities of KEPServerEX to fit the communication requirements of a specific device or system. The plug-in driver handles all of the proprietary communications between the device/system and the OPC layer, KEPServerEX. The KEPServerEX core then handles all OPC and Proprietary Client communications between the plug-in driver and the Client application. For a complete list of features and capabilities please visit the KEPServerEX overview page.

- OPC Foundation Certified - The Best of OPC on the Market
- High Performance - Multi Threaded - Runtime Configurable
- Detailed Protocol Diagnostics - Communications Trace
- Detailed OPC Diagnostics - Communications Trace
- Native Interfaces - Client Connectivity Beyond the OPC Standards
- Stratus High Availability Computing - Certified
- Marathon High Availability Computing - Certified
- Kepware 2 Hour Demonstration Mode on all Products

