



kepware

TECHNOLOGIES

Kepware Technologies develops software products known worldwide for their quality, reliability and ease of use. Utilizing the latest technologies, our dedicated staff continually enhances the performance of our products to give you the “best in class” software for the Industrial Communication market.

Product Guide

pg

installing, licensing / unlocking kepware products

Kepware Product Guide

We thank you for choosing Kepware Technologies. Our focus on industrial automation software technology allows us to provide a growing range of products for every major industrial protocol. For detailed product descriptions, please visit our web site at: www.kepware.com

PAGE

01 Kepware Technologies Products

The steps in this section explain how to acquire the software installation files for our software.

- 01 Installing From CD-ROM
- 02 Installing From Web Download

03 iSNMP OPC Server

Provides operators with a real time view of the health of their Ethernet network devices, the overall Ethernet network traffic volume and overall Ethernet network status from within their OPC software environment.

- 03 Installing iSNMP OPC Server
- 05 Licensing / Unlocking

07 KEPServerEX

Is the leading OPC Server providing unsurpassed industrial connectivity with over 80 downloadable device drivers that support 100's of device model types. KEPServerEX Provides a single server interface for these drivers - bringing consistency to all of your OPC enabled applications.

- 07 Installing KEPServerEX
- 09 Licensing / Unlocking
- 11 Installing OPC DX Plug-in for KEPServerEX
- 13 Transferring a Driver License

17 LinkMaster

Has the capabilities of both a “server” and “client” application, allowing it to access, collect, organize, and link data from other OPC servers and offer that data to any OPC/DDE client.

- 17 Installing LinkMaster**
- 19 Licensing / Unlocking**
- 21 Transferring a Product License**

25 RedundancyMaster

Increases the reliability and availability of OPC data by allowing multiple OPC Servers to be configured into redundant pairs. These redundant OPC Server pairs seamlessly appear as a single OPC Server to any OPC Client.

- 25 Installing RedundancyMaster**
- 27 Licensing / Unlocking**
- 29 Transferring a Product License**

33 U-CON Protocol Server

The U-CON Protocol Server enables you to quickly and easily develop communications drivers for nearly any serial and Ethernet device. U-CON’s server interface is based on the same technology found in KEPServerEX.

- 33 Installing U-CON Protocol Server**
- 37 Licensing / Unlocking**
- 39 Transferring a Product License**

43 Documentation, 3rd Party Software

Here you will find information regarding how to access Help Files, 3rd Party Connectivity Guides, End User License Agreement & Warranty information, Return Policies, and Tech Support information.

- 43 Accessing Software Help**
- 44 Technical Support | 3rd Party Connectivity Guides**
- 45 End User License Agreement**
- 46 Return Policy & Limited Warranty**

Installing:

Kepware Technologies Products

There are two common ways to obtain Kepware product installation files. You may install directly from a Kepware Products CD-ROM or install after download.

01. To begin the CD Installation

Insert the Kepware Product Installations & Information CD into your CD drive. The CD should automatically run the installation. If it does not, then you should browse your CD drive using Windows Explorer and double click on "Autorun.inf" located on the CD.

02. Install Products

Click on the "Install Products" button to open the Products & Services Download page.

03. OPC Server Products or Bridging Software

This page has two sections. Select the product you wish to install from the following sections: OPC Server Products or Bridging Software.

04. Follow Product Installation

You may now skip ahead in this booklet to the section regarding your software product's specific installation instructions.

(See Table of Contents)

01. To obtain via the World Wide Web (WWW)

Please navigate your browser to the following web address:

http://www.kepware.com/products/products_download.html

Click the “Download” button next to the respective product you wish to download.

02. Download Form - *New User*

If this is your first time downloading from Kepware.com, you are required to submit the Download Form presented on your screen at this time. After you have completed all required fields you may submit the form. Once the form has been submitted, you will be asked where to save your install set. Select location and continue.

03. Download Form - *Existing User*

If you are a returning customer, and have already submitted a Download Form you may click the “I’m already registered, begin download now” button to save the install set.

04. Download Complete

Once the download is completed you may browse to the downloaded file to run the installation.

05. Follow Product Installation

You may now skip ahead in this booklet to the section regarding your software product’s specific installation instructions .

(See Table of Contents)

Installing:

iSNMP OPC Server

Is the original network management and analysis software developed specifically for the industrial controls marketplace. iSNMP seamlessly integrates monitoring and analyzing of managed and unmanaged Ethernet networks into OPC enabled applications.

01. Start the Installation

Click on the Install iSNMP button to start the server installation.

02. Installation Welcome

In the Installation Welcome Dialog box click the "Next" button to continue.

03. License Agreement

Read the License Agreement, if you agree with, check the "I accept" radio button. Click the "Next" button to continue.

04. User Name & Preferences

By default the install will pull the logged-on User's Name and Organization from the System Properties. Change them as needed and select whether this is to be an install for all users or for only this user. After you have entered the information, click the "Next" button to continue.

05. Choose Installation Directory

By default the installation installs to:

C:\Program Files\Kepware Technologies\IndustrialSNMP

Either change the directory or click the "Next" button to accept the default and continue.

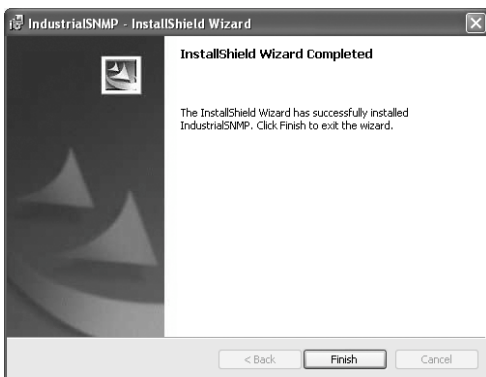


06. Install the Software

Read on-screen instruction and click the “Install” button to install and continue.

07. Installation Complete

Once the Installation is complete click the “Finish” button to acknowledge and close the install wizard.



Licensing / Registering:

iSNMP OPC Server

The following process is required for entering a license and unlocking iSNMP OPC Server.

01. Run the License Utility

To license the iSNMP server run the iSNMP License Utility found in the Kepware Technologies Start Menu Folder.

02. Enter License Number

Once the License Utility is running, select "Step 1" to enter the License number provided to you from Kepware. This 21-digit number can be found on the sticker inside the Product Installations & Information CD case. Once you have entered the number (including the dashes) click the "Next" to continue.

03. Generate System Code

At this point you will generate your System Code. Supply Kepware your System Code. *You will also need to send you License number. No Authorization Codes will be generated without the matching license number.* Pick **one** of the following methods

- 1) **Call:** +1 (207) 846 5881
- 2) **Fax:** +1 (207) 846 5947
- 3) **Email:** password@kepware.com

to supply the information and receive your License Authorization Code from Kepware Technologies.

04. Close the Dialog

Click the "Finish" button to close the dialog. Once you have received your License Authorization Code you may go to the next step.



06. Restart the iSNMP License Utility

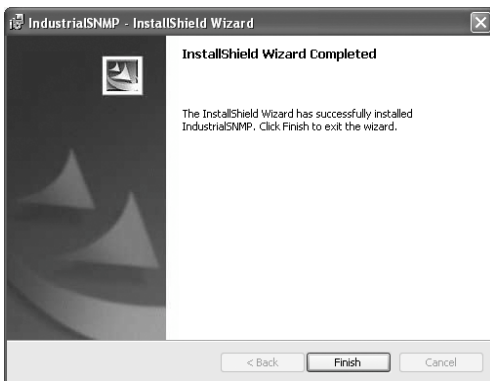
Once you have your Authorization Code back from Kepware you will need to restart the iSNMP License Utility - please do so now.

07. Enter License Authorization Code

Once the License Utility is running, select "Step 2" to enter your License Authorization Code (including the dashes) you received from Kepware and click the "Next" button to continue.

08. Complete the Registration

You should now see a dialog box listing the licensed features. Click on the "Finish" button to close the dialog box. The iSNMP OPC Server registration is now complete.



Installing:

KEPServerEX

Has the widest range of available “Plug-in” device drivers and components for the industrial market with over 80 downloadable drivers that support 100’s of model types. Kepware is the leading provider of industrial connectivity software.

01. Start-up the Server

Click the “Install” button to start the KEPServerEX installation.

02. Access Help Menu

In the file download box, choose “Open” to install KEPServerEX now or click “Save” to copy the install set to a PC or Network Drive.

03. Saving the Kepware Setup files

Use the InstallShield Wizard dialog to save the Kepware Setup files to your PC or Network Drive.

04. Installation Welcome

In the Installation Welcome dialog box, click the “Next” button to continue.

05. License Agreement

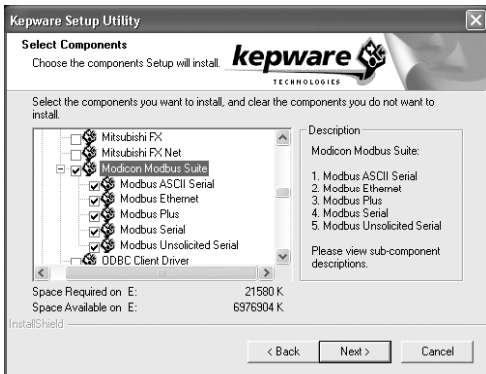
Read the License Agreement and click the “Yes” button to accept the terms and continue. Click the “No” button if you do not accept the terms and wish to cancel the installation.

06. Supply Unlock Information

By default KEPServerEX will be installed into the following directory:

C:\Program Files\KEPServerEX

You may change the default directory now or click the “Next” button to accept the default directory and continue.



07. Select Install Set

Expand and select the drivers, plug-ins and documentation you wish to install by clicking on the associated checkbox.

08. Start Menu & Other Directories

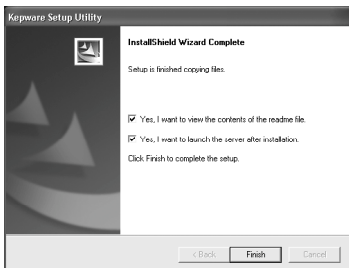
By default, the installation creates a Start Menu directory named Kepware Products. The installation also creates a KEPServerEX sub-directory located in the Kepware Products parent directory. You may change these directory locations now or click the “Next” button to accept the default locations and continue.

09. Verify Install Components

Verify the selected install components/settings and click the “Next” button to start the install, or the “Back” button to modify selections.

10. Complete the Set-up

Once the installation is completed, click the “Finish” button to complete the set-up.



Licensing / Unlocking:

KEPServerEX

The following process is required for entering a license and unlocking KEPServerEX.

01. Start-up the Server

If KEPServerEX is not already running, please start it now.

02. Access Help Menu

From the main menu, select: **Help | License a Driver or Plug-in**

A dialog will appear indicating that there are currently unlicensed drivers or plug-ins that are available to be licensed.

03. Select Items

To license a driver or plug-in, simply select the desired item from the dialog's list and click on the "License" button. A new dialog will appear indicating the driver or plug-in you have selected and contains a field for entering the license number.

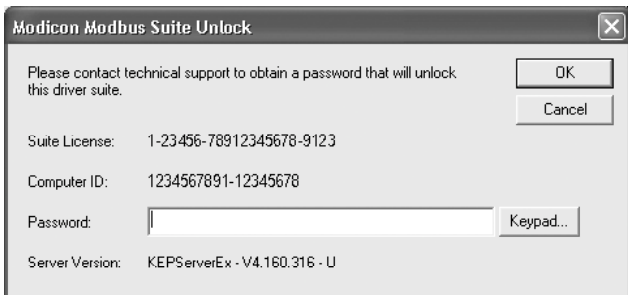
04. Enter License

You will be asked to enter the license for the item you purchased. This 21-digit number can be found on the sticker inside the Product Installations & Information CD case. Enter the number now and click the "License" button. *The "Keypad" button is provided for PCs without keyboards.*

05. Item Licensed

Congratulations, the item is now licensed. However you will need to unlock the item for unlimited use. Click "Yes" to unlock item now, or "No" to unlock the item later.

Once the product license number has been entered, you will now be running in the **10 day** installation grace period, in which time you need to contact a qualified representative to fully unlock the driver or plug-in for full time use.



06. Supply Unlock Information

The Driver Unlock window displays the unlock information (License Number, Computer ID, and Server Version Number).

Pick **one** of the following methods

- 1) Call:** +1 (207) 846 5881
- 2) Fax:** +1 (207) 846 5947
- 3) Email:** password@kepware.com

to supply the unlock information and receive your password from Kepware Technologies. Be sure to include the contact information of the product owner. For example, if you are unlocking the items for a client, we will need the contact information of that client.

07. Enter Password

Enter the password you receive from Kepware, and then click the "OK" button to continue.

08. Item Unlocked

The item is now unlocked for full-time, unrestricted use. *Repeat steps 3-7 for other items you wish to unlock.*

09. Restart KEPServerEX

You must now stop and then restart KEPServerEX so that the license and unlock process will take effect.

Installing DX OPC Plug-in For:

KEPServerEX

OPC Data Exchange (DX) Plug-in was designed to address the needs of Device-to-Device and Bus-to-Bus interoperability by applying the same technologies currently used by desktop applications at the device level. By adding OPC DA client support to an existing OPC DA server we end up with a DX server that not only provides access to its data, but has the ability to gather data from other OPC DA enabled devices.

01. To begin the Installation

You must install KEPServerEX prior to installing the DX OPC Plug-in.

Click the "Install" button on the Products & Services Download page from your Kepware Products CD or from Kepware.com to start the DX OPC Plug-in for KEPServerEX installation.

02. 'Open' or 'Save' the install set

In the file download box, choose "Open" to install KEPServerEX now or click "Save" to copy the install set to a PC or Network Drive.

03. Saving the Kepware Setup files

Use the InstallShield Wizard dialog to save the Kepware Setup files to your PC or Network Drive.

04. Select Install Directory

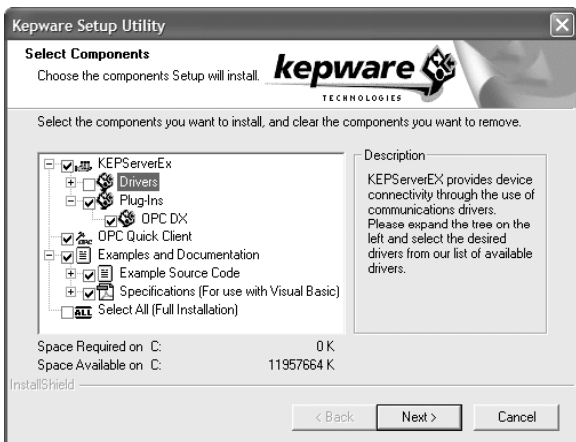
By default the DX OPC Plug-in will install to folder directory:

C:\Program Files\KEPServerEX

Either change the installation directory or click the "Next" button to accept the default and continue.

05. Choose Modify to install the DX OPC Plug-in

At the Kepware Set-up Utility window, please select the Modify option and click the "Next" button.

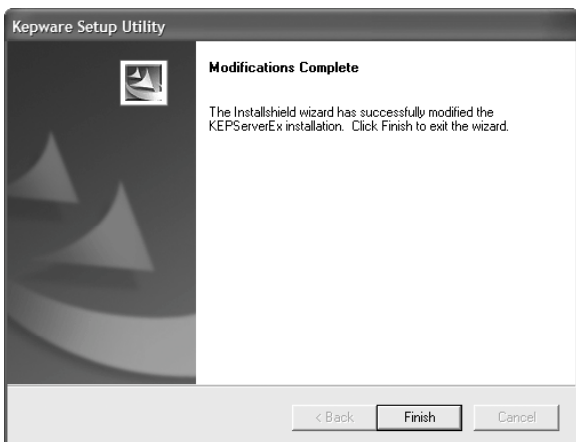


06. Component Selection

In the Component Selection Dialog, expand the Plug-ins component tree and select 'OPC DX' - click the "Next" button to continue.

07. Installation Finished

Once the installation is completed, click the "Finish" button to complete the set-up.



Licensing / Unlocking DX OPC Plug-in For :

KEPServerEX

The following process is required for entering a license and unlocking the DX OPC Plug-In For KEPServerEX.

01. Start-up the Server

If KEPServerEX is not already running, please start it now.

02. Access Help Menu

From the main menu, select: **Help | License a Driver or Plug-in**

A dialog will appear indicating that there are currently unlicensed drivers or plug-ins that are available to be licensed.

03. Select Items

To license a driver or plug-in, simply select the desired item from the dialog's list and click on the "License" button. A new dialog will appear indicating the driver or plug-in you have selected and contains a field for entering the license number.

04. Enter License

You will be asked to enter the license for the item you purchased. This 21-digit number can be found on the sticker inside the Product Installations & Information CD case. Enter the number now and click the "License" button. *The "Keypad" button is provided for PCs without keyboards.*

05. Item Licensed

Congratulations, the item is now licensed. However you will need to unlock the item for unlimited use. Click "Yes" to unlock item now, or "No" to unlock the item later.

Once the product license number has been entered, you will now be running in the 10 day installation grace period, in which time you need to contact a qualified representative to fully unlock the driver or plug-in for full time use.



06. Supply Unlock Information

The Plug-in Unlock window displays the unlock information (License Number, Computer ID, and Server Version Number).

Pick **one** of the following methods

- 1) Call:** +1 (207) 846 5881
- 2) Fax:** +1 (207) 846 5947
- 3) Email:** password@keppure.com

to supply the unlock information and receive your password from Kepware Technologies. *Be sure to include the contact information of the product owner. For example, if you are unlocking the items for a client, we will need the contact information of that client.*

07. Enter Password

Enter the password you receive from Kepware, and then click the "OK" button to continue.

08. Item Unlocked

The item is now unlocked for full-time, unrestricted use.

09. Restart KEPServerEX

You must now stop and then restart KEPServerEX so that the license and unlock process will take effect.

Transferring a Driver or Plug-in License for: **KEPServerEX**

The following process is required for transferring a driver or plug-in license for KEPServerEX.

01. Start-up the Server

If KEPServerEX is not already running, please start it now.

When moving a driver or plug-in license from one machine to another, it is always a good idea to reacquaint one's self with our software license agreement. This is also a good time to record all license numbers.

02. Access Help Menu - Target System

From the main menu, select: **Help | Transfer a Driver or Plug-in License**
It is required that both source and target machines must have a compatible removable media drive (e.g., Floppy Disk Drive, USB Key).

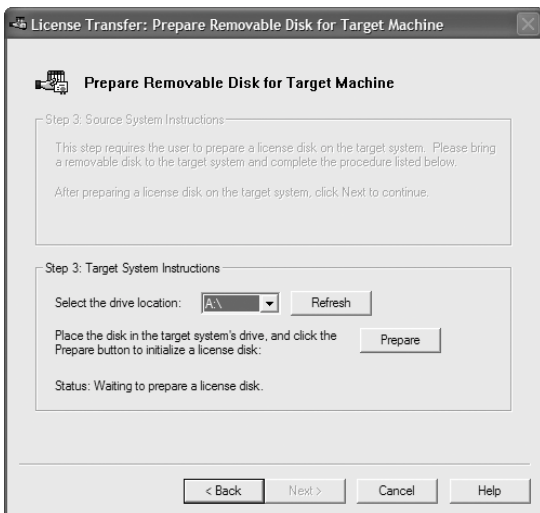
03. Read On-screen Instructions

Read instructions on License Transfer Wizard. Once you have read the instructions, click the "Next" button to continue.

04. License Agreement

Read the license agreement. If you agree to the terms of the agreement, click the "Next" button to continue.





05. Start with the Target Machine

Start with the Target Machine. In other words, start with the machine to where the license will be transferred. Select an unlicensed driver or plug-in from the dropdown list. Click the “Next” button to continue.

06. Select removable Media

Select the removable media drive for preparation. Make sure the media is loaded. Click the “Prepare” button when you are ready. The media will now be prepared for license transfer. Once successfully prepared, click the “Next” button to continue.

07. Select the Source System

After you have prepared the media from the Target System, you must remove the media and insert it into the Source System. Be sure that you will be able to complete all the steps described here in a timely fashion before continuing with the license transfer process.

08. Access Help Menu - Source System

From the main menu, select: **Help | Transfer a Driver or Plug-in License**

09. Select Source System

Select the Source System. Select a licensed driver or plug-in from the dropdown list. Click the “Next” button to continue.

10. Read On-Screen Instructions

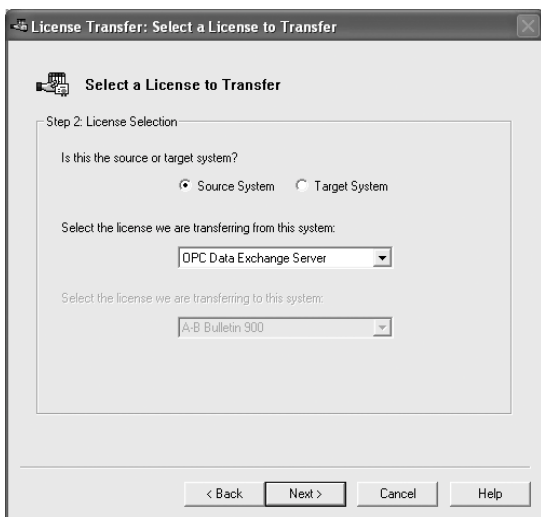
Read on-screen instructions and click the “Next” button.

11. Verify Install Components

Be sure that the prepared media from Target Machine is loaded into the Source Machine. Select appropriate drive and click the “Transfer” button. Once successfully transferred, click the “Next” button to continue.

12. Remove Media - Source System

Read on-screen instructions and remove the media from the Source System

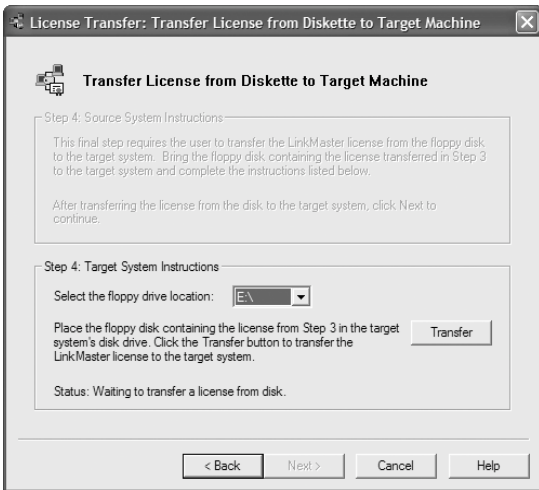


13. Insert Media - Target System

Insert media from the Source System back into the Target System and click the “Next” button to continue.

14. Transfer the License

Select the removable media drive from the drop-down list and click the “Transfer” button to transfer the license.



15. Success!

You have successfully transferred your license from the Source System to the Target System. Click the “Next” button to continue.

16. Transfer Complete

Read the on-screen summary of the transfer process and click the “Finish” button to exit the process.

Installing:

LinkMaster

Has the capabilities of both a “server” and “client” applications, allowing it to access, collect, organize, and link data from other OPC servers and offer that data to any OPC/DDE client.

01. Start-up the Installation

Click the “Install” button to start the LinkMaster installation.

02. Access Help Menu

In the file download box, choose “Open” to install LinkMaster now or click “Save” to copy the install set to a PC or Network Drive.

03. Saving the Kepware Setup files

Use the InstallShield Wizard dialog to save the Kepware Setup files to your PC or Network Drive.

04. Installation Welcome

In the Installation Welcome dialog box, click the “Next” button to continue.

05. License Agreement

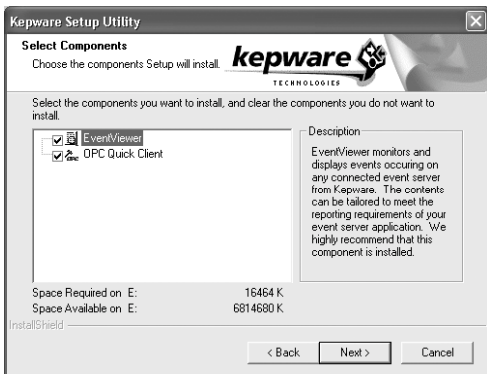
Read the License Agreement and click the “Yes” button to accept the terms and continue. Click the “No” button if you do not accept the terms and wish to cancel the installation.

06. Supply Unlock Information

By default LinkMaster will be installed into the following directory:

C:\Program Files\LinkMaster

You may change the default directory now or click the “Next” button to accept the default directory and continue.



07. Select Install Set

Expand and select the drivers, plug-ins and documentation you wish to install by clicking on the associated checkbox.

08. Start Menu & Other Directories

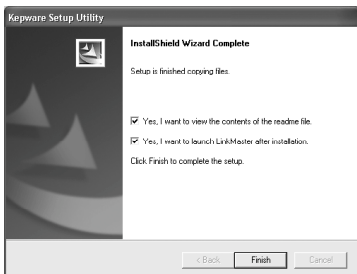
By default, the installation creates a Start Menu directory named Kepware Products. The installation also creates a LinkMaster sub-directory located in the Kepware Products parent directory. You may change these directory locations now or click the “Next” button to accept the default locations and continue.

09. Verify Install Components

Verify the selected install components/settings and click the “Next” button to start the install, or the “Back” button to modify selections.

10. Complete the Set-up

Once the installation is completed, click the “Finish” button to complete the set-up.



Licensing / Unlocking:

LinkMaster

The following process is required for entering a license and unlocking LinkMaster.

01. Start-up LinkMaster

If LinkMaster is not already running, please start it now.

02. Access Help Menu

From the main menu, select: **Help | Purchase a License**

03. Enter License

You will be asked to enter the license for the item you purchased.

This 21-digit number can be found on the sticker inside the Product Installations & Information CD case. Enter the number now and click the "OK" button to continue. *The "Keypad" button is provided for PCs without keyboards.*

04. Item Licensed

Congratulations, the item is now licensed. However you will need to unlock the item for unlimited use. Click "Yes" to unlock item now, or "No" to unlock the item later.

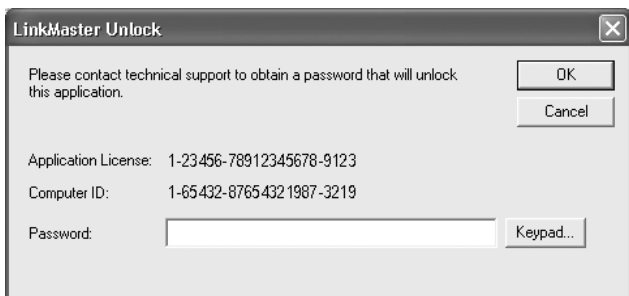
05. Supply Unlock Information

The Unlock window displays the unlock information (License Number, Computer ID, and Product Version Number).

Pick **one** of the following methods

- 1) Call:** +1 (207) 846 5881
- 2) Fax:** +1 (207) 846 5947
- 3) Email:** password@keppure.com

to supply the unlock information and receive your password from Keppure Technologies. Be sure to include the contact information of the product owner. For example, if you are unlocking the items for a client, we will need the contact information of that client.



06. Enter Password

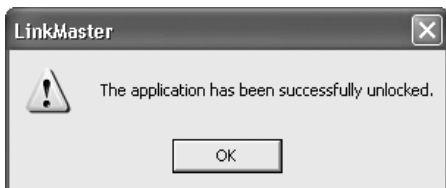
Enter the password you receive from Kepware, and then click the "OK" button to continue.

07. Item Unlocked

The item is now unlocked for full-time, unrestricted use.

08. Restart LinkMaster

You must now stop and then restart LinkMaster so that the license and unlock process will take effect.



Transferring a Product License for:

LinkMaster

The following process is required for transferring the product license for LinkMaster.

01. Start-up LinkMaster

If LinkMaster is not already running, please start it now. *This is also a good time to record all license numbers.*

02. Access Help Menu - Target System

From the main menu, select: **Help | Transfer a License**

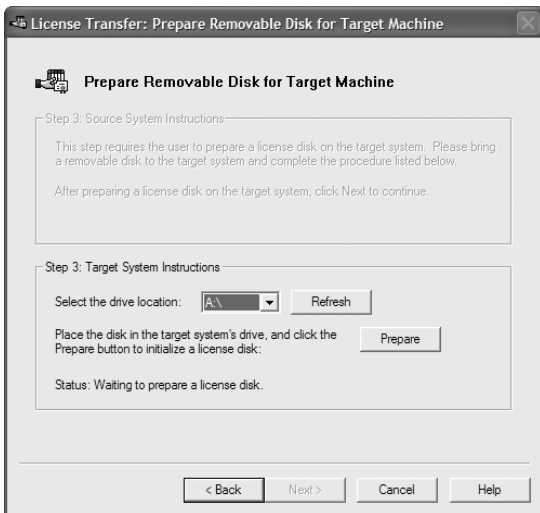
03. Read On-screen Instructions

Read instructions on License Transfer Wizard. Once you have read the instructions, click the "Next" button to continue.

04. License Agreement

Read the license agreement. If you agree to the terms of the agreement, click the "Next" button to continue.





05. Start with the Target Machine

Start with the Target Machine. In other words, start with the machine to where the license will be transferred.

06. Select removable Media

Select the removable media drive for preparation. Make sure the media is loaded. Click the "Prepare" button when you are ready. The media will now be prepared for license transfer. Once successfully prepared, click the "Next" button to continue.

07. Select the Source System

After you have prepared the media from the Target System, you must remove the media and insert it into the Source System. Be sure that you will be able to complete all the steps described here in a timely fashion before continuing with the license transfer process.

08. Access Help Menu - Source System

From the main menu, select: **Help | Transfer a License**

09. Select Source System

Select the Source System. Select a licensed driver or plug-in from the dropdown list. Click the “Next” button to continue.

10. Read On-Screen Instructions

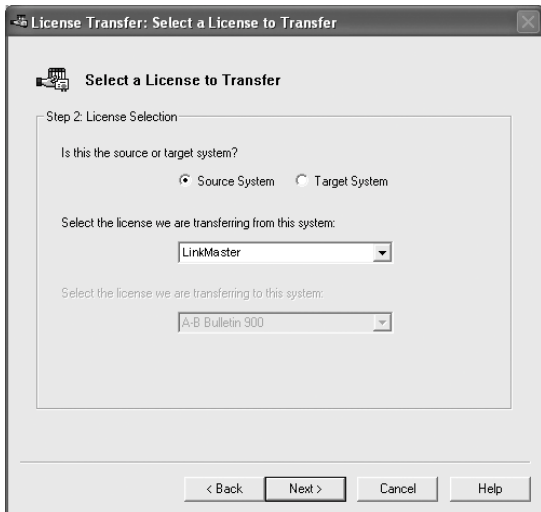
Read on-screen instructions and click the “Next” button.

11. Verify Install Components

Be sure that the prepared media from Target Machine is loaded into the Source Machine. Select appropriate drive and click the “Transfer” button. Once successfully transferred, click the “Next” button to continue.

12. Remove Media - Source System

Read on-screen instructions and remove the media from the Source System



13. Insert Media - Target System

Insert media from the Source System back into the Target System and click the “Next” button to continue.

14. Transfer the License

Select the removable media drive from the drop-down list and click the “Transfer” button to transfer the license.



15. Success!

You have successfully transferred your license from the Source System to the Target System. Click the “Next” button to continue.

16. Transfer Complete

Read the on-screen summary of the transfer process and click the “Finish” button to exit the process.

Installing:

RedundancyMaster

Increases the reliability and availability of industrial data by allowing multiple OPC Servers to be configured into redundant pairs. These redundant OPC Server pairs seamlessly appear as a single OPC Server to any OPC Client.

01. Start-up the Installation

Click the "Install" button to start the RedundancyMaster installation.

02. Access Help Menu

In the file download box, choose "Open" to install RedundancyMaster now or click "Save" to copy the install set to a PC or Network Drive.

03. Saving the Kepware Setup files

Use the InstallShield Wizard dialog to save the Kepware Setup files to your PC or Network Drive.

04. Installation Welcome

In the Installation Welcome dialog box, click the "Next" button to continue.

05. License Agreement

Read the License Agreement and click the "Yes" button to accept the terms and continue. Click the "No" button if you do not accept the terms and wish to cancel the installation.

06. Supply Unlock Information

By default RedundancyMaster will be installed into the following directory:

C:\Program Files\RedundancyMaster

You may change the default directory now or click the "Next" button to accept the default directory and continue.



07. Select Install Set

Expand and select the drivers, plug-ins and documentation you wish to install by clicking on the associated checkbox.

08. Start Menu & Other Directories

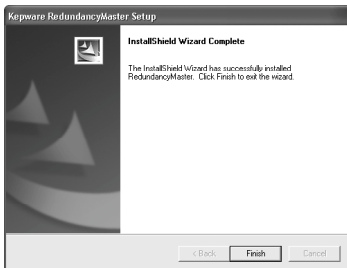
By default, the installation creates a Start Menu directory named Kepware Products. The installation also creates a RedundancyMaster sub-directory located in the Kepware Products parent directory. You may change these directory locations now or click the “Next” button to accept the default locations and continue.

09. Verify Install Components

Verify the selected install components/settings and click the “Next” button to start the install, or the “Back” button to modify selections.

10. Complete the Set-up

Once the installation is completed, click the “Finish” button to complete the set-up.



Licensing / Unlocking:

RedundancyMaster

The following process is required for entering a license and unlocking RedundancyMaster.

01. Start-up RedundancyMaster

If RedundancyMaster is not already running, please start it now.

02. Access Help Menu

From the main menu, select: **Help | Unlock a License**

03. Enter License

You will be asked to enter the license for the item you purchased.

This 21-digit number can be found on the sticker inside the Product Installations & Information CD case. Enter the number now and click the "OK" button to continue. *The "Keypad" button is provided for PCs without keyboards.*

04. Item Licensed

Congratulations, the item is now licensed. However you will need to unlock the item for unlimited use. Click "Yes" to unlock item now, or "No" to unlock the item later.

05. Supply Unlock Information

The Driver Unlock window displays the unlock information (License Number, Computer ID, and Product Version Number).

Pick **one** of the following methods

- 1) Call:** +1 (207) 846 5881
- 2) Fax:** +1 (207) 846 5947
- 3) Email:** password@keppure.com

to supply the unlock information and receive your password from Keppure Technologies. Be sure to include the contact information of the product owner. For example, if you are unlocking the items for a client, we will need the contact information of that client.



06. Enter Password

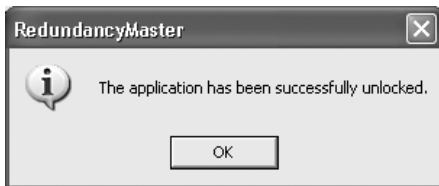
Enter the password you receive from Kepware, and then click the "OK" button to continue.

07. Item Unlocked

The item is now unlocked for full-time, unrestricted use.

08. Restart RedundancyMaster

You must now stop and then restart RedundancyMaster so that the license and unlock process will take effect.



Transferring a Product License for: RedundancyMaster

The following process is required for transferring a product license for RedundancyMaster.

01. Start-up RedundancyMaster

If RedundancyMaster is not already running, please start it now.

This is also a good time to record all license numbers.

02. Access Help Menu - Target System

From the main menu, select: **Help | Transfer a License**

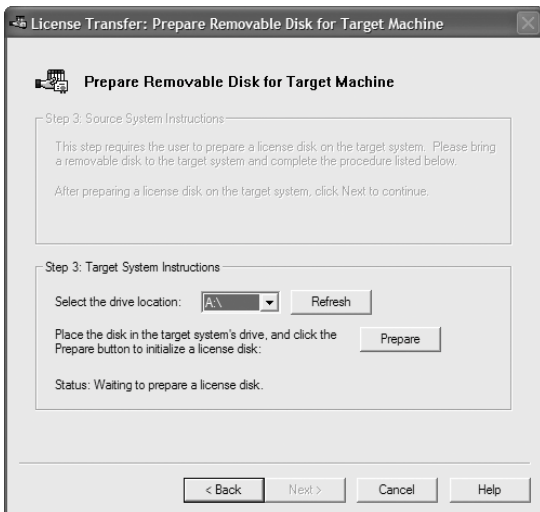
03. Read On-screen Instructions

Read instructions on License Transfer Wizard. Once you have read the instructions, click the "Next" button to continue.

04. License Agreement

Read the license agreement. If you agree to the terms of the agreement, click the "Next" button to continue.





05. Start with the Target Machine

Start with the Target Machine. In other words, start with the machine to where the license will be transferred.

06. Select removable Media

Select the removable media drive for preparation. Make sure the media is loaded. Click the "Prepare" button when you are ready. The media will now be prepared for license transfer. Once successfully prepared, click the "Next" button to continue.

07. Select the Source System

After you have prepared the media from the Target System, you must remove the media and insert it into the Source System. Be sure that you will be able to complete all the steps described here in a timely fashion before continuing with the license transfer process.

08. Access Help Menu - Source System

From the main menu, select: **Help | Transfer a License**

09. Select Source System

Select the Source System. Select a licensed driver or plug-in from the dropdown list. Click the “Next” button to continue.

10. Read On-Screen Instructions

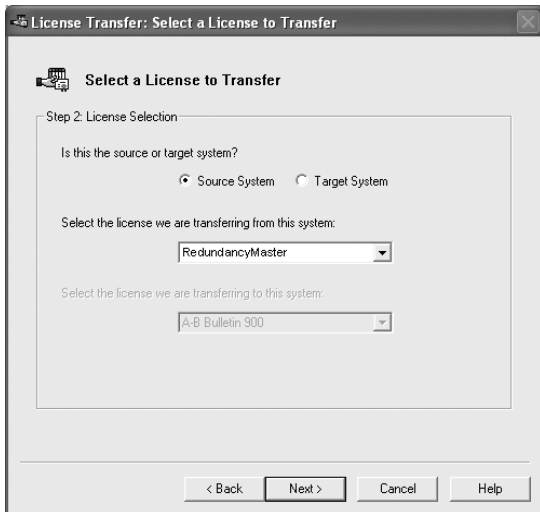
Read on-screen instructions and click the “Next” button.

11. Verify Install Components

Be sure that the prepared media from Target Machine is loaded into the Source Machine. Select appropriate drive and click the “Transfer” button. Once successfully transferred, click the “Next” button to continue.

12. Remove Media - Source System

Read on-screen instructions and remove the media from the Source System

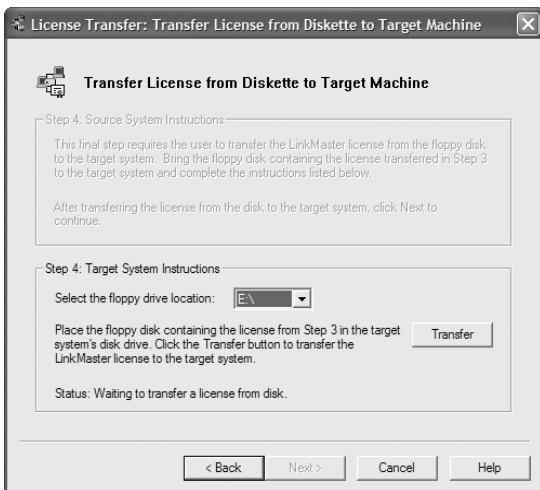


13. Insert Media - Target System

Insert media from the Source System back into the Target System and click the “Next” button to continue.

14. Transfer the License

Select the removable media drive from the drop-down list and click the “Transfer” button to transfer the license.



15. Success!

You have successfully transferred your license from the Source System to the Target System. Click the “Next” button to continue.

16. Transfer Complete

Read the on-screen summary of the transfer process and click the “Finish” button to exit the process.

Installing:

U-CON Protocol Server

The U-CON Protocol Server enables you to quickly and easily develop communications drivers for nearly any serial and Ethernet device. U-CON server interface is based on the same technology found in KEPServerEX.

01. Start-up the Server

Click the "Install" button to start the U-CON Protocol Server installation.

02. Access Help Menu

In the file download box, choose "Open" to install U-CON Protocol Server now or click "Save" to copy the install set to a PC or Network Drive

03. Saving the Kepware Setup files

Use the InstallShield Wizard dialog to save the Kepware Setup files to your PC or Network Drive.

04. Installation Welcome

In the Installation Welcome dialog box, click the "Next" button to continue.

05. License Agreement

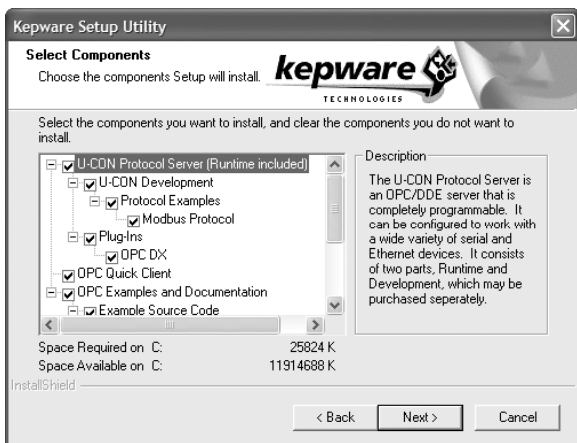
Read the License Agreement and click the "Yes" button to accept the terms and continue. Click the "No" button if you do not accept the terms and wish to cancel the installation

06. Supply Unlock Information

By default U-CON Protocol Server will be installed into the following directory:

C:\Program Files\U-CON Protocol Server

You may change the default directory now or click the "Next" button to accept the default directory and continue.



07. Select Install Set

Expand and select the drivers, plug-ins and documentation you wish to install by clicking on the associated checkbox.

08. Start Menu & Other Directories

By default, the installation creates a Start Menu directory named Kepware Products. The installation also creates a U-CON Protocol Server sub-directory located in the Kepware Products parent directory. You may change these directory locations now or click the "Next" button to accept the default locations and continue.

09. Verify Install Components

Verify the selected install components/settings and click the "Next" button to start the install, or the "Back" button to modify selections.

10. Complete the Set-up

Once the installation is completed, click the "Finish" button to complete the set-up.

Licensing / Unlocking:

U-CON Protocol Server

The following process is required for entering a license and unlocking U-CON Protocol Server.

01. Start-up the Server

If U-CON Protocol Server is not already running, please start it now.

02. Access Help Menu

From the main menu, select: **Help | Purchase a Driver or Plug-in License**

03. Select Items

In the dialog box, select the item you wish to license and unlock and click the "License" button. *You may only unlock one item at a time.*

04. Enter License

You will be asked to enter the license for the item you purchased. This 21-digit number can be found on the sticker inside the Product Installations & Information CD case. Enter the number now and click the "License" button. *The "Keypad" button is provided for PCs without keyboards.*

05. Item Licensed

Congratulations, the item is now licensed. However you will need to unlock the item for unlimited use. Click "Yes" to unlock item now, or "No" to unlock the item later.



06. Supply Unlock Information

The Driver Unlock window displays the unlock information (License Number, Computer ID, and Server Version Number).

Pick **one** of the following methods

- 1) Call:** +1 (207) 846 5881
- 2) Fax:** +1 (207) 846 5947
- 3) Email:** password@kepware.com

to supply the unlock information and receive your password from Kepware Technologies. Be sure to include the contact information of the product owner. For example, if you are unlocking the items for a client, we will need the contact information of that client.

07. Enter Password

Enter the password you receive from Kepware, and then click the "OK" button to continue.

08. Item Unlocked

The item is now unlocked for full-time, unrestricted use.

09. Restart U-CON Protocol Server

You must now stop and then restart U-CON Protocol Server so that the license and unlock process will take effect.

Transferring a Driver License for: U-CON Protocol Server

The following process is required for transferring a driver license for U-CON Protocol Server.

01. Start-up the Server

If U-CON Protocol Server is not already running, please start it now.
This is also a good time to record all license numbers.

02. Access Help Menu - Target System

From the main menu, select: **Help | Transfer a Driver or Plug-in License**

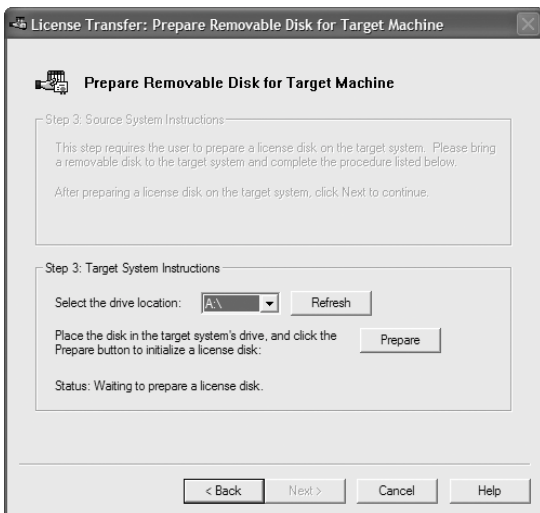
03. Read On-screen Instructions

Read instructions on License Transfer Wizard. Once you have read the instructions, click the "Next" button to continue.

04. License Agreement

Read the license agreement. If you agree to the terms of the agreement, click the "Next" button to continue.





05. Start with the Target Machine

Start with the Target Machine. In other words, start with the machine to where the license will be transferred. Select an unlicensed driver or plug-in from the dropdown list. Click the “Next” button to continue.

06. Select removable Media

Select the removable media drive for preparation. Make sure the media is loaded. Click the “Prepare” button when you are ready. The media will now be prepared for license transfer. Once successfully prepared, click the “Next” button to continue.

07. Select the Source System

After you have prepared the media from the Target System, you must remove the media and insert it into the Source System.

08. Access Help Menu - Source System

From the main menu, select: **Help | Transfer a Driver or Plug-in License**

09. Select Source System

Select the Source System. Select a licensed driver or plug-in from the dropdown list. Click the “Next” button to continue.

10. Read On-Screen Instructions

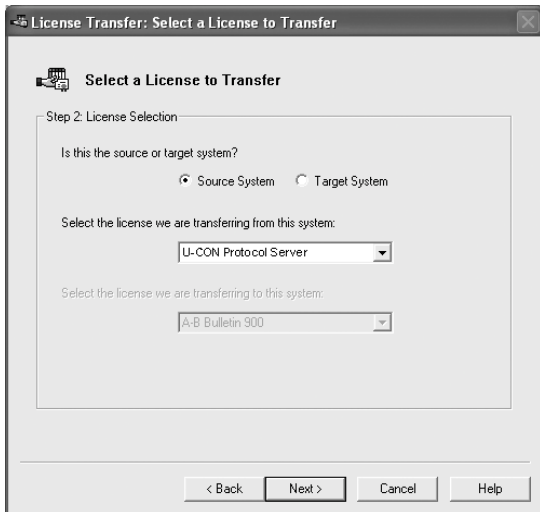
Read on-screen instructions and click the “Next” button.

11. Verify Install Components

Be sure that the prepared media from Target Machine is loaded into the Source Machine. Select appropriate drive and click the “Transfer” button. Once successfully transferred, click the “Next” button to continue.

12. Remove Media - Source System

Read on-screen instructions and remove the media from the Source System

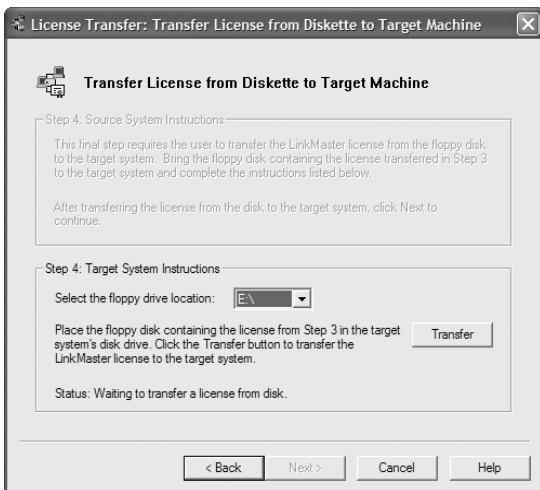


13. Insert Media - Target System

Insert media from the Source System back into the Target System and click the “Next” button to continue.

14. Transfer the License

Select the removable media drive from the drop-down list and click the “Transfer” button to transfer the license.



15. Success!

You have successfully transferred your license from the Source System to the Target System. Click the “Next” button to continue.

16. Transfer Complete

Read the on-screen summary of the transfer process and click the “Finish” button to exit the process.

Accessing Kepware Technologies

Product / Software Help

You can obtain detailed information our products and how they function by accessing the Help Menu.

01. Start-up the product

Please start up the product now.

02. Access Help Menu

You can access the Help File browser from the product's main menu.

To do this, simply select: **Help | Contents**

Use this feature to browse for product topics

You can also access the Help File Search from the product's main menu.

To do this, simply select: **Help | Search**

Use this feature to search for specific product topics

03. Help File System

The product Help Files contain basic information on setting up devices for communications, supported device addresses, as well as detailed descriptions of error codes and possible solutions.

Help Files also provide you with information on the various components and wizards in the products.

The OPC Connectivity guide provides basic information on connecting to the Kepware server software from 3rd party client software.

04. Driver Documentation

The driver Help Files provide the information needed to establish communications to the devices supported by that driver. The Help Files contain cable diagrams, Communications parameters, and I/O address formats. To make connectivity easier, most drivers have been designed to use the factory defaults on start up.

05. Online Help Files

Lastly, you will find guides and trouble shooting tips on our web site at: **www.kepware.com**

Kepware Technologies

Technical Support

Kepware provides unlimited e-mail support for all Software whether a demo or registered license.

01. Kepware Technical Support

Kepware will provide a total of two hours free phone support for all registered Software after paying the applicable license fees. Kepware will provide unlimited email support so long as you have paid Kepware any applicable maintenance or support fees and subject to the terms of those agreements. All corrections and maintenance releases will be made available through Kepware's Internet site.

All major product releases of the Software are subject to upgrade fees. At no time will on-site support be provided without advance payment to Kepware for a minimum of two days on-site engineering support services, plus all expenses.

Accessing 3rd-Party

Connectivity Guides

Also provided in this installation CD are Kepware's Client Connectivity Guides.

01. Connection Details

This guide contains details on how to connect to Kepware server products from third party clients like RSView, Cimplicity, Genesis, PanelMate PC, Think n' Do, Intouch, iFix32 and WinCC.

02. Access HMI Support

These are a few of the many OPC clients that can connect to Kepware server products. The document is in Adobe PDF file format, clicking on the HMI/Client Support link in the General section will take you to the HMI Support page.

Kepware Technologies End User

License Agreement

The software accompanying this license agreement (the Software) is the property of Kepware Technologies Inc, and is protected by United States and International Copyright laws and International treaty provisions.

No ownership rights are granted by this Agreement or possession of the Software. Therefore, you must treat the Licensed Software like any other copyrighted material (e.g., a book or musical recording), except that you may make a single copy for backup or archival purposes. Your rights and obligations in its use are described as follows:

01. Single Computer

You may use and display this software on a single computer.

02. Archival Copy

You may make one copy of the software for archival purposes or you may copy the software onto your hard disk and hold the original for archival purposes.

03. Source Code

You may not modify or attempt to reverse engineer the software, or make any attempt to change or even examine the source code of the software.

04. License Transfer

You may transfer the software to another computer using the utilities provided. However, the software must be used on only a single computer at one time.

05. Distribution

You may not give or distribute copies of the software or written materials associated with the software to others. You may not sub-license, sell, or lease the software to any person or business.

Kepware Technologies End User

Return Policy & Limited Warranty

Kepware does not warrant that the Software will be error free, that it will satisfy your planned applications or that all defects in the Software can be corrected.

01. Return Policy

The original licensee of the software can return it within sixty (60) days of purchase. Please call us for a Return Material Authorization Number.

02. Limited Warranty

If Kepware provides information or assistance regarding the use of the Software or otherwise, Kepware is not assuming the role of engineering consultant. Kepware disclaims responsibility for any errors or omissions arising in connection with engineering in which its Software or such information or assistance is used.

The foregoing is the sole and exclusive warranty offered by Kepware. Kepware disclaims all other warranties, express or implied, including but not limited to the implied warranties of merchantability and fitness for a particular purpose, with regard to the licensed software and all accompanying materials.

In no event shall Kepware be liable for incidental or consequential damages, including lost profit, lost savings, lost opportunities, or other incidental or consequential damages arising out of the use or inability to use the licensed software, even if Kepware has been advised of the possibility of such damages.

Kepware's entire liability shall be, at Kepware's option, either (a) return of the price paid for the Software (or component), or (b) repair or replacement of the Software (or component) that does not meet Kepware's Limited Warranty and which is returned to Kepware within the warranty period. This shall be the sole and exclusive obligation of Kepware and your sole and exclusive remedy with respect to any such failure. The Limited Warranty is void if failure of the Software (or component) has resulted from accident, abuse or misapplication.



kepware
TECHNOLOGIES

+1 (207) 846 5881

support@kepware.com

60 Forest Falls Drive, Ste 5

Yarmouth, Maine 04096