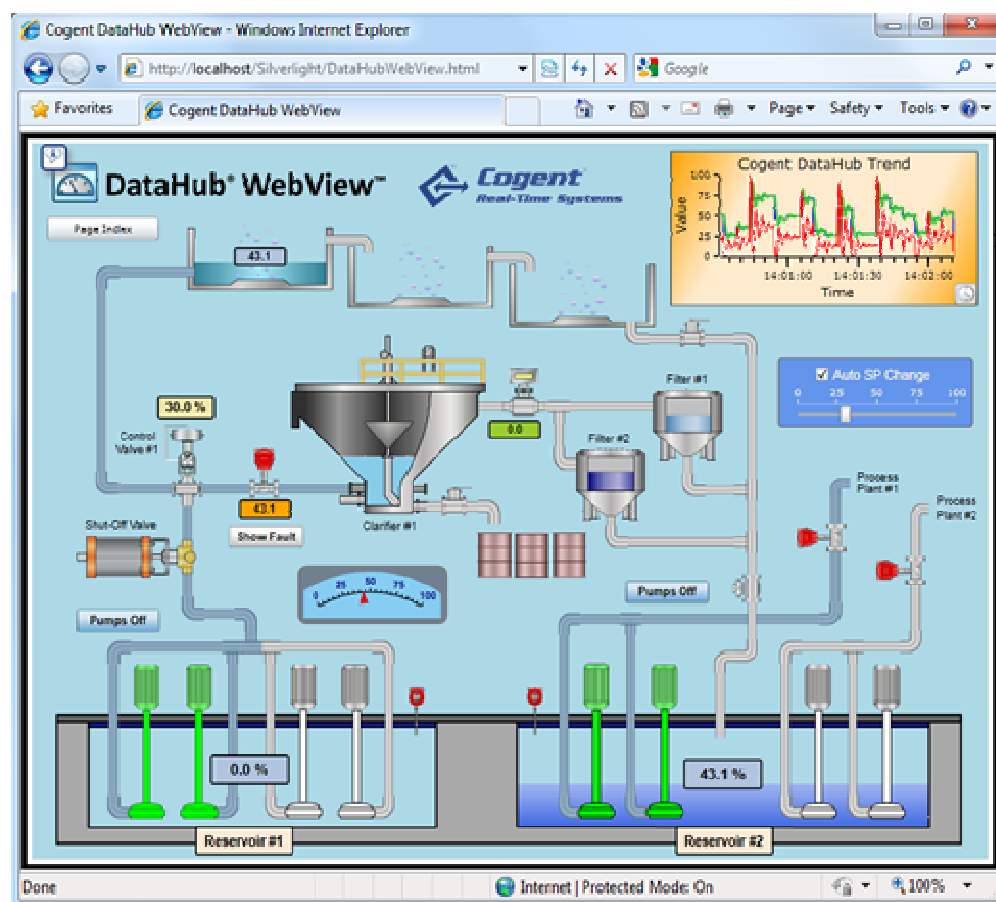




## DataHub WebView™

### Product description

DataHub WebView is a state-of-the-art, rich internet application for designing and delivering high-quality, real-time displays. Based on Microsoft's latest Silverlight 4.0 technology and Cogent's industry leading middleware back-end, this browser-based application introduces new ways to deliver process data to anyone over a network or Internet connection. Because it's so easy to install, you can create your own private-cloud-based system in no time. You get to control who gets in, who sees which data and who has access to build new screens.



## Product includes

- **DataHub WebView application** - for building and displaying leading edge web displays.
- **1 x DataHub WebView Client connection** - to get you started. **See WebView feature description for more licensing information.**
- **DataHub Web Server** - built-in fully secure web server to serve your WebView pages. **Click here for more details.**
- **Historian** - high-speed data historian provides histories for trend displays.
- **OPC support** - easy, reliable OPC connections to your process data.
- **DataHub API support** - need to get data from legacy systems, the DataHub API helps you customize your data collection.
- **Silverlight Policy Server** - provides security protection for the DataHub WebView client program that runs in the web browser.
- **Tunnel/Mirror** - provides data access from the WebView client in the browser and the DataHub back-end. Also allows you to connect to other DataHubs over a network connection to collect data from remote locations.

## Common features

- **DataHub QuickTrend** - a real-time trend application that ships with the Cogent DataHub.
- **Aggregation** - data from multiple sources can be easily aggregated into a common data set and made available to any DataHub client program, such as WebView, QuickTrend or the Historian.
- **DataHub Scripting** - make the Cogent DataHub do exactly what you want using this powerful scripting language.
- **Security** - full permissions based security allows you to restrict access and define both authentication and authorization policies.

## Add-on features

- **DDE Support** - read and write access to DDE servers and clients. Easy drag and drop into Excel and simple high-speed updates out of Excel.
- **Bridging** - the easy way to associate data from one system with data from another. Bridge the gap between servers that don't normally talk to each other.
- **Data Logging** - a simple configuration interface lets you write data to a database. Easy to follow scripting reads data back out of a database to use as inputs to other DataHub clients.
- **Email/SMS notifications** - receive an email or SMS message when certain conditions within your system are met. Embed current values into your messages so you stay well informed and can make better decisions.
- **OPC A&E support** - pull data from OPC A&E servers and make it available to OPC DA or any other DataHub client program. Acknowledge A&E events from within your OPC DA client programs.