

**Kepware Products for Windows 95™, 98™, 2000™,  
NT™, And XP™**

# **KepserverEx Client Connectivity Guide**

**For Clear Controls ClearView**



**KTSM-00023**

**Copyright © 2001, Kepware Technologies**

## **KEPWARE END USER LICENSE AGREEMENT AND LIMITED WARRANTY**

The software accompanying this license agreement (the Software) is the property of Kepware Inc, and is protected by United States and International Copyright laws and International treaty provisions. No ownership rights are granted by this Agreement or possession of the Software. Therefore, you must treat the Licensed Software like any other copyrighted material (e.g., a book or musical recording), except that you may make a single copy for backup or archival purposes. Your rights and obligations in its use are described as follows:

1. You may use and display this software on a single computer.
2. You may make one copy of the software for archival purposes or you may copy the software onto your hard disk and hold the original for archival purposes.
3. You may not modify or attempt to reverse engineer the software, or make any attempt to change or even examine the source code of the software.
4. You may transfer the software to another computer using the utilities provided. However, the software must be used on only a single computer at one time.
5. You may not give or distribute copies of the software or written materials associated with the software to others.
6. You may not sub-license, sell, or lease the software to any person or business.

### **Return Policy**

The original licensee of the software can return it within sixty (60) days of purchase. Please call us for a Return Material Authorization Number.

### **Limited Warranty**

Kepware does not warrant that the Software will be error free, that it will satisfy your planned applications or that all defects in the Software can be corrected. If Kepware provides information or assistance regarding the use of the Software or otherwise, Kepware is not assuming the role of engineering consultant. Kepware disclaims responsibility for any errors or omissions arising in connection with engineering in which its Software or such information or assistance is used.

The foregoing is the sole and exclusive warranty offered by Kepware.

Kepware disclaims all other warranties, express or implied, including but not limited to the implied warranties of merchantability and fitness for a particular purpose, with regard to the licensed software and all accompanying materials.

In no event shall Kepware be liable for incidental or consequential damages, including lost profit, lost savings, lost opportunities, or other incidental or consequential damages arising out of the use or inability to use the licensed software, even if Kepware has been advised of the possibility of such damages.

Kepware's entire liability shall be, at Kepware's option, either (a) return of the price paid for the Software (or component), or (b) repair or replacement of the Software (or component) that does not meet Kepware's Limited Warranty and which is returned to Kepware within the warranty period. This shall be the sole and exclusive obligation of Kepware and your sole and exclusive remedy with respect to any such failure. The Limited Warranty is void if failure of the Software (or component) has resulted from accident, abuse or misapplication.

### **Support**

Kepware provides *unlimited e-mail* support for all Software whether a demo or registered license. Kepware will provide a total of *two hours* free phone support for all registered Software after paying the applicable license fees. Kepware will provide *unlimited phone* support so long as you have paid Kepware any applicable maintenance or support fees and subject to the terms of those agreements. All corrections and maintenance releases will be made available through Kepware's Internet site. All major product releases of the Software are subject to upgrade fees. At no time will on-site support be provided without advance payment to Kepware for a minimum of two days on-site engineering support services, plus all expenses.

### **Trademarks**

Microsoft® and Microsoft Excel® are registered trademarks, Windows™ is a trademark of Microsoft Corporation.

32 Bit KepserverEx Connectivity Guide

#### **Kepware Technologies**

81 Bridge Street  
Yarmouth, Maine 04096

**Sales:** (207) 846-5881

**Technical Support:** (207) 846-5881

**Fax:** (207) 846-5947

**E-mail:** Sales@kepware.com or  
technical.support@kepware.com

**Home Page:** <http://www.Kepware.com>

**Copyright © 2001, Kepware Technologies**

# **Table of Contents**

<b>INTRODUCTION TO KEPSERVEREX .....</b>	<b>1</b>
<b>ACCESSING KEPSERVEREX .....</b>	<b>1</b>
USING KEPSERVEREX DRIVERS .....	2
<b>CLEARCONTROLS CLEARVIEW AS AN OPC CLIENT .....</b>	<b>3</b>
CONNECTING THE CLEARVIEW OPC CLIENT.....	3
CREATE A NEW PROJECT .....	4
<i>Create a Connection to the OPC Server .....</i>	<i>5</i>
CREATE A SCREEN .....	8
<i>Create a Screen to Display OPC Tag Data .....</i>	<i>8</i>
<i>View the Data.....</i>	<i>10</i>
<i>Starting the ClearView Server .....</i>	<i>11</i>
RUN THE PROJECT.....	12
<b>USING KEPWARE'S OPC QUICK CLIENT .....</b>	<b>13</b>



# Introduction to KepserverEx

KepserverEx is a 32 bit windows application that provides a means of bringing data and information from a wide range of industrial devices and systems into client applications on your windows PC. KepserverEx falls under the category of a "Server" application. It is very common to hear the term "client/server application" in use across many software disciplines and business segments. In the industrial market, it has usually come to mean the sharing of manufacturing or production data between a variety of applications ranging from human machine interface software and data historians, to large MES and ERP applications.

Regardless of the business segment served, client/server applications have one thing in common: a standardized method of sharing data. In the industrial segment, many client/server technologies have been developed over the last ten years. Initially, some of these technologies were proprietary. In many cases these proprietary client/server architectures were in wide use but remained unavailable to third party applications. Early in the development of windows, Microsoft provided a generic client/server technology called DDE or Dynamic Data Exchange. DDE did provide a basic architecture that would allow many windows applications from a wide range of vendors to share data, but there was one problem. DDE was not designed for the industrial market. It lacked much of the speed and robustness desired in an industrial setting. However, this did not stop DDE from becoming a dominant client/server architecture, largely due to its availability in most windows applications. In time, variations on Microsoft's DDE were developed by some of the leading vendors in the market. These variations addressed some of the speed and reliability issues of DDE but many people in the industrial segment agreed that a better system needed to be developed.

With the advent of 32 bit Operating Systems, and the use of Ethernet to provide communications between devices, there was a need for quicker and cleaner data transfer between software applications. This is where OPC saw its birth into the industry.

OPC (OLE for Process and Control) servers provide a standardized method of allowing multiple industrial applications to share data in a quick and robust manner. The OPC server provided in this package has been designed to meet the demanding requirements found in the industrial environment.

This OPC server has been designed as a two-part program. The primary component provides all of the OPC and DDE connectivity as well as the user interface functions. The second part is comprised of plug-in communications drivers. This two-part design allows you to add multiple communications options to your SCADA application while utilizing a single OPC server product thus reducing your learning curve as your project grows.

OPC technology reflects the move from closed proprietary solutions to open architectures that provide more cost-effective solutions based on established standards.

## Accessing KepserverEx

A Windows based client application must be used to view data from the KepserverEx application. In this section we will cover the basics of connecting a number of common OPC clients to KepserverEx. While we cannot possibly cover every client application that exists, we believe that after reviewing this document you should be able to deal with most client applications.

The intention of this section is to show connectivity to KepserverEx. It is assumed that you have already either configured your KepserverEx application by selecting the appropriate driver and settings or you have run the Simulator demo (Simdemo.opf) which is included with KepserverEx. For simplicity, the Simdemo project will be used for all examples contained in this section.

Before beginning any of the examples, start the KepserverEx application by selecting it from your Start Menu or from its desktop icon. Once the server is loaded, use the File|Open command to

load the “Simdemo” project. The KepserverEx application is always active once you have opened an existing project or configured at least one channel and device in a new project. After you have selected a project, in this case the Simdemo project, KepserverEx will automatically load this project when an OPC client application invokes KepserverEx’s OPC server component.

Users have always had the ability to create what we refer to as “user defined tags” in their KepserverEx application. Prior to OPC, defined tags gave a DDE application designer the ability to create a label for device data. Assume register 1000 contained the value of parts made, without defined tags a DDE application would have directly accessed register 1000. Using defined tags a label can be created like “PartsMade”. Now the DDE application could access the data via this new label, removing the machine level knowledge from the client application and keeping it at the server level where it belongs. This label, while useful for DDE is a necessity for OPC clients. For OPC clients, defined tags take on a greater role. Like the DDE example, defined tags allow you to create labels for your device data and keep the configuration of those tags in the server. OPC clients have a major advantage over DDE clients. OPC clients can browse the defined tags you create in your KepserverEx application, which allows you to simply point and click on a tag to add it to your OPC client project.

*OPC Tag Browsing allows you to see a list of the defined tags you have created in your KepserverEx application, directly within your OPC client application.*

For more information on defined tags see the “Designing a Project” section of the KepserverEx help file, which can be accessed from the Help/Contents menu selection of the KepserverEx application.

## Using KepserverEx Drivers

Part of the innovative design of Kepware’s OPC/DDE Server Technology is the separation of the Hardware Protocol Driver from the Server Technology. This separation allows the user to use one or more drivers in the server at the same time. Each driver has its own help file which provides information on devices supported, communications parameters, cabling, addressing, and error messages.

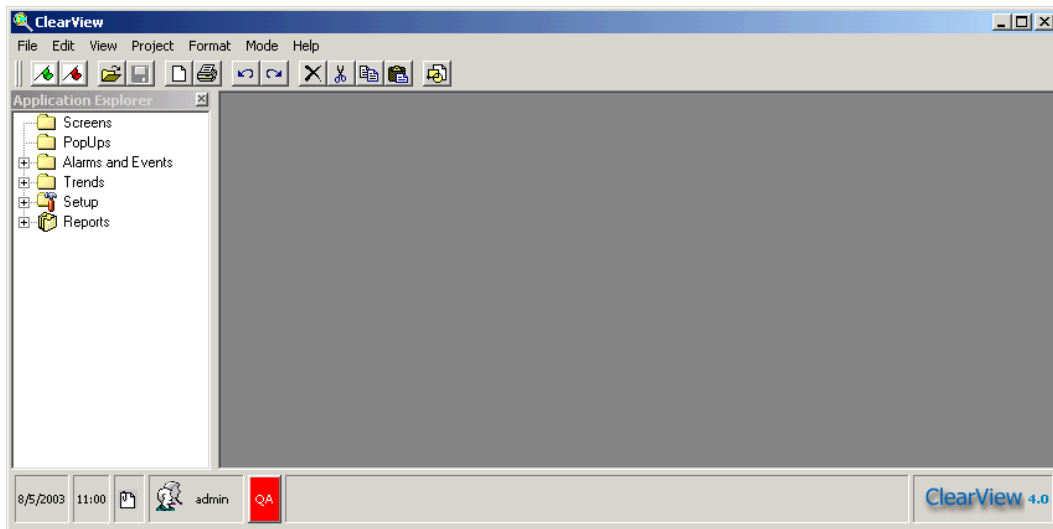
The driver help file should contain all of the information you will need to connect your device to the PC so that we can talk to it. If you do not connect to the device be sure to check the error messages and look up their meaning in the help file.

# ClearControls ClearView as an OPC Client

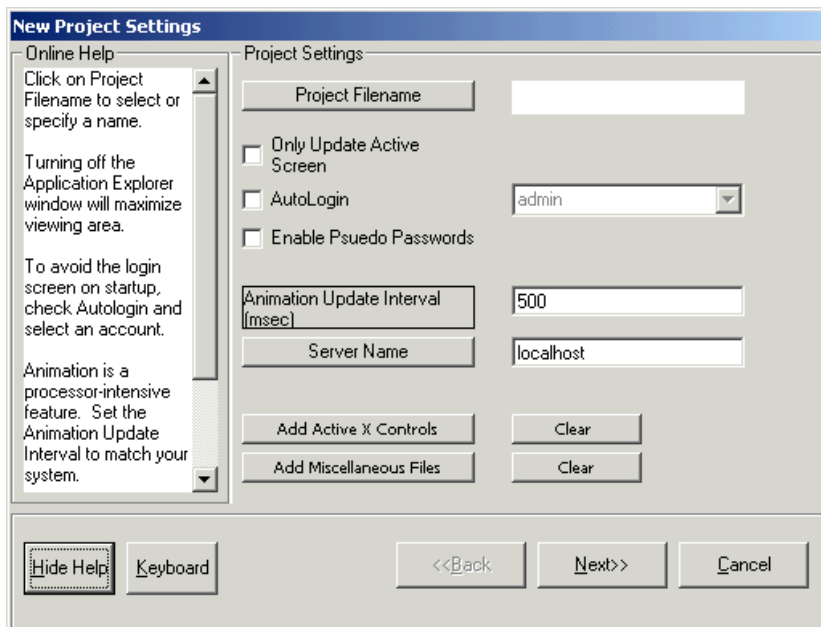
## Connecting the ClearView OPC Client

ClearControls ClearView as an OPC Client is one of the many HMIs that can be used to connect to KepserverEx. The following steps will show you how to create an OPC connection to the server from ClearView.

From Programs in the Start menu select the Clearview Client shortcut.

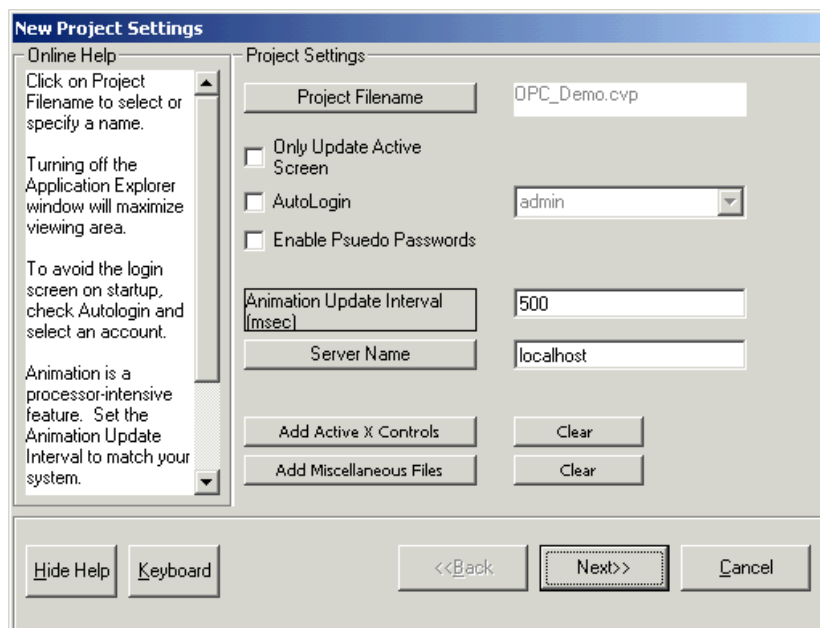


Once it is open click on File|New Project to create a new ClearView project.



## Create a New Project

You will now see a New Project Settings window. Click on the Project Filename button to open the file Save As window. Enter a name for your project in the File name field. We named our project “OPC\_Demo”

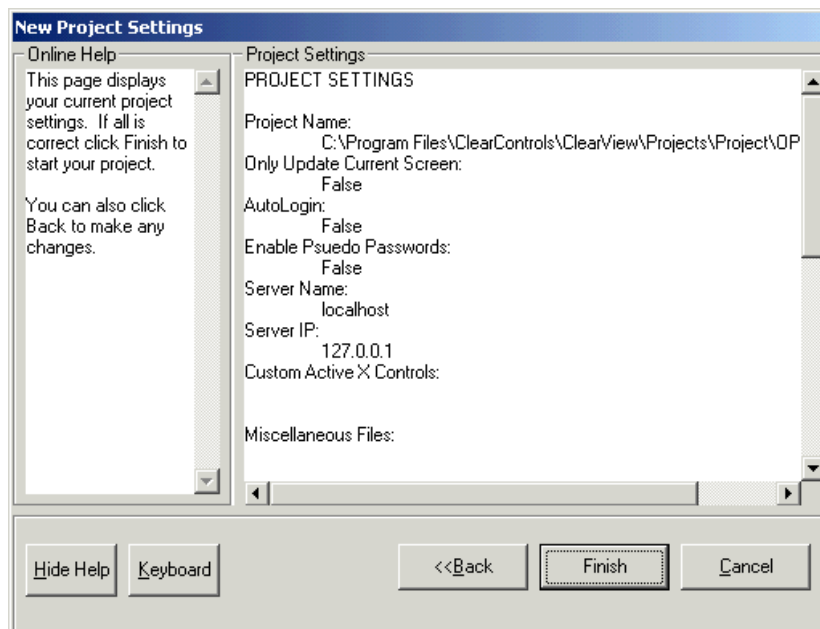


The 'New Project Settings' dialog box is shown. It has a title bar 'New Project Settings' and a menu bar with 'Online Help'. The 'Project Settings' section contains the following fields and controls:

- Project Filename:** A text field containing 'OPC\_Demo.cvp'.
- Only Update Active Screen:** An unchecked checkbox.
- AutoLogin:** A dropdown menu with 'admin' selected.
- Enable Psuedo Passwords:** An unchecked checkbox.
- Animation Update Interval (msec):** A text field containing '500'.
- Server Name:** A text field containing 'localhost'.
- Buttons:** 'Add Active X Controls', 'Clear', 'Add Miscellaneous Files', and another 'Clear' button.

At the bottom, there are buttons for 'Hide Help', 'Keyboard', '<<Back', 'Next>>' (highlighted), and 'Cancel'.

At this point for the purpose of this demonstration you can accept the rest of the settings in their defaults. To do this Click the Next button until you reach the project summary.



The 'New Project Settings' dialog box is shown, displaying the 'PROJECT SETTINGS' summary. The 'Project Name' field contains the path 'C:\Program Files\CleerControls\CleerView\Projects\Project\OPC'. The other settings are as follows:

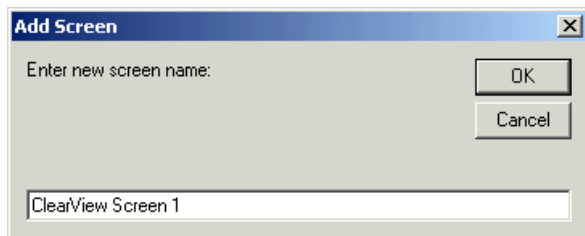
- Only Update Current Screen:** False
- AutoLogin:** False
- Enable Psuedo Passwords:** False
- Server Name:** localhost
- Server IP:** 127.0.0.1
- Custom Active X Controls:** (empty)
- Miscellaneous Files:** (empty)

At the bottom, there are buttons for 'Hide Help', 'Keyboard', '<<Back', 'Finish' (highlighted), and 'Cancel'.

Click the “Finish” button to close the New Project Settings window.

Next you will get a prompt to add a screen in the Add Screen dialog box.



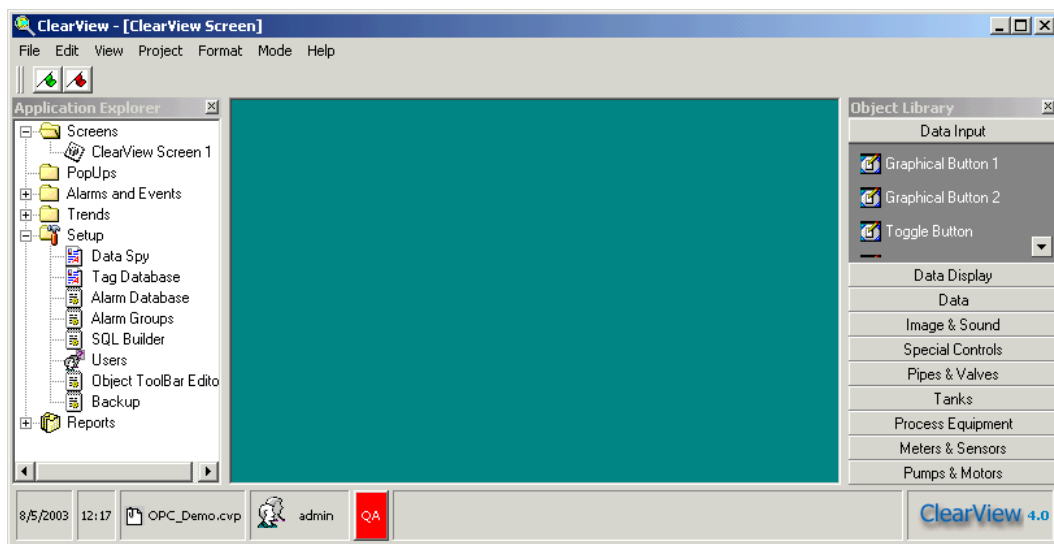


For the intents of this example you can accept the default screen name of “ClearView Screen 1” by clicking the OK button

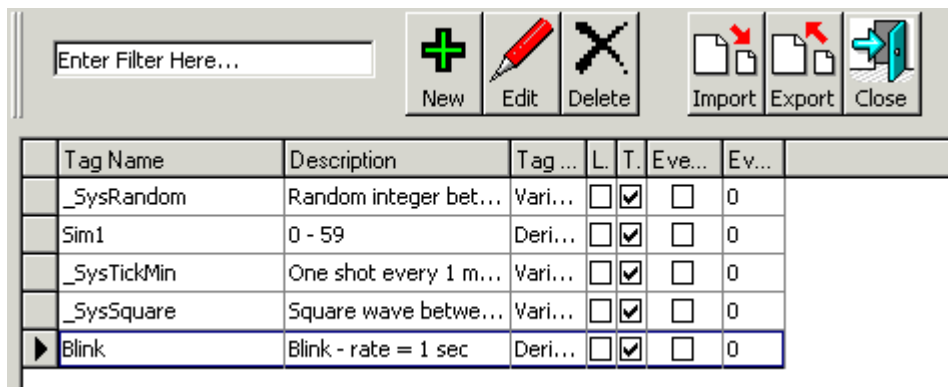
For more information on the other parameters in the New Project Settings window see the ClearView manual.

## Create a Connection to the OPC Server

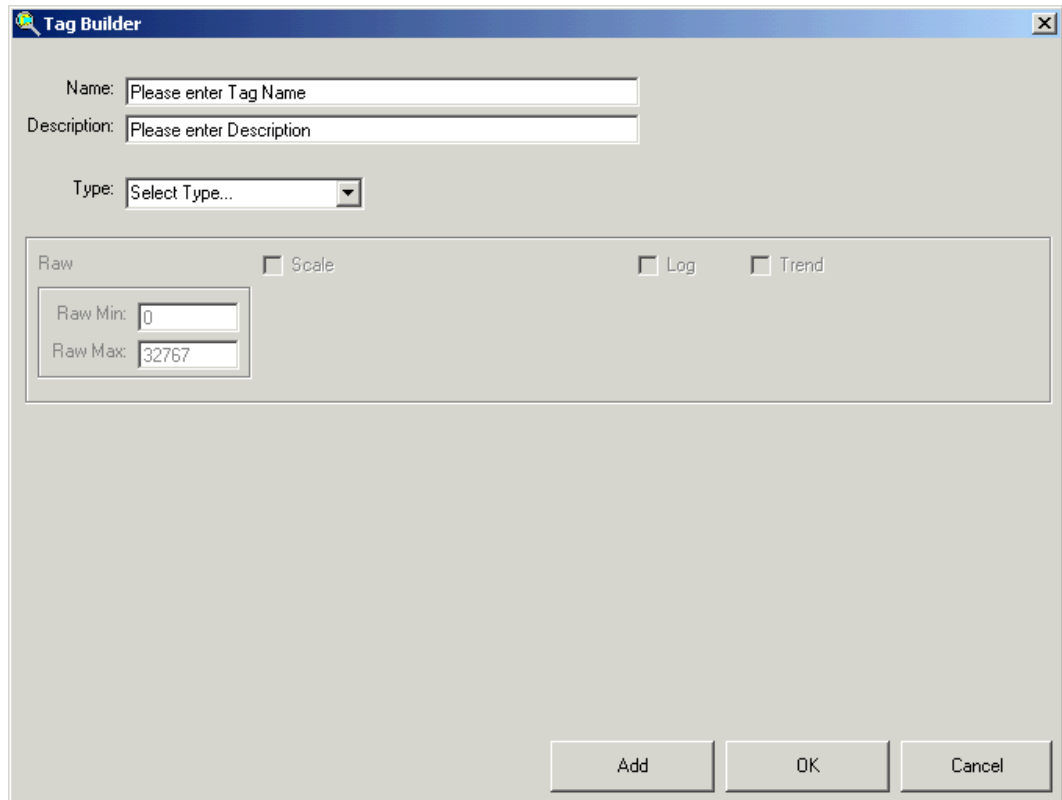
Now that the new project has been created it is time to connect to KepserverEx and add items to the project. Expand the Setup folder in the Application Explorer window.



In the Setup folder, double click on Tag Database to open the Tag Database utility.



Click the “New” button to create a new tag. A Tag Builder window will appear.

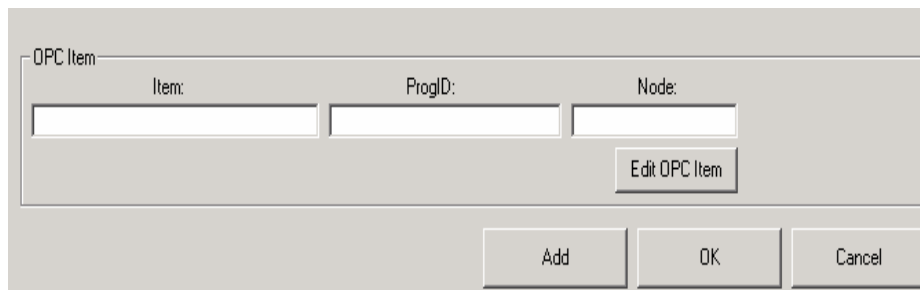


The Tag Builder dialog box is shown with the following fields and options:

- Name:** Please enter Tag Name
- Description:** Please enter Description
- Type:** Select Type... (dropdown menu)
- Raw:** ☐ **Scale:** ☐ **Log:** ☐ **Trend:** ☐
- Raw Min:** 0
- Raw Max:** 32767
- Buttons:** Add, OK, Cancel

Enter a tag name in the Name field. In the Description field, type specified description (e.g. Test OPC tag). Lastly, in the “Type” field, use the drop down menu to select the item type of OPC Tag.

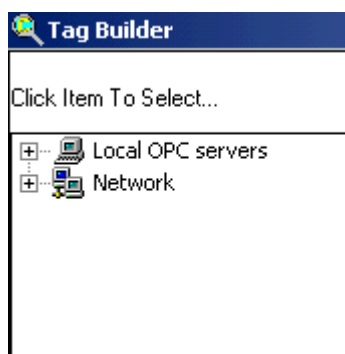
Once you select the OPC Tag type you will get the OPC Item section in the Tag Builder. Click on the “Edit OPC Item” button to browse for and select a tag from KepserverEx.



The OPC Item section of the Tag Builder dialog box is shown with the following fields and options:

- OPC Item:**
  - Item:**
  - ProgID:**
  - Node:**
- Edit OPC Item** (button)
- Buttons:** Add, OK, Cancel

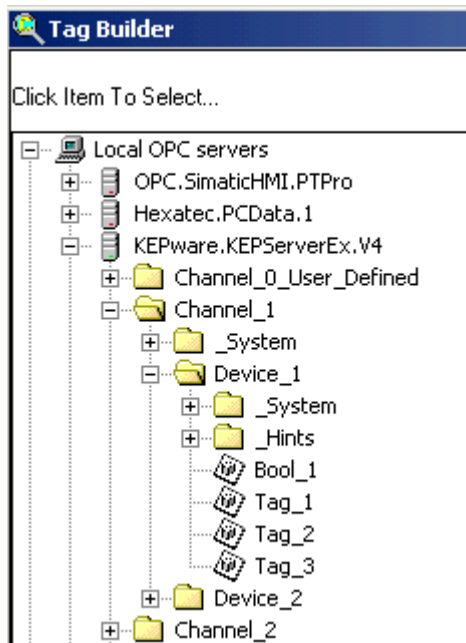
In the browser explorer expand Local OPC Servers. ClearView will automatically browse your system for available OPC server programs.



The Tag Builder dialog box is shown with the browser explorer expanded. The browser explorer shows the following structure:

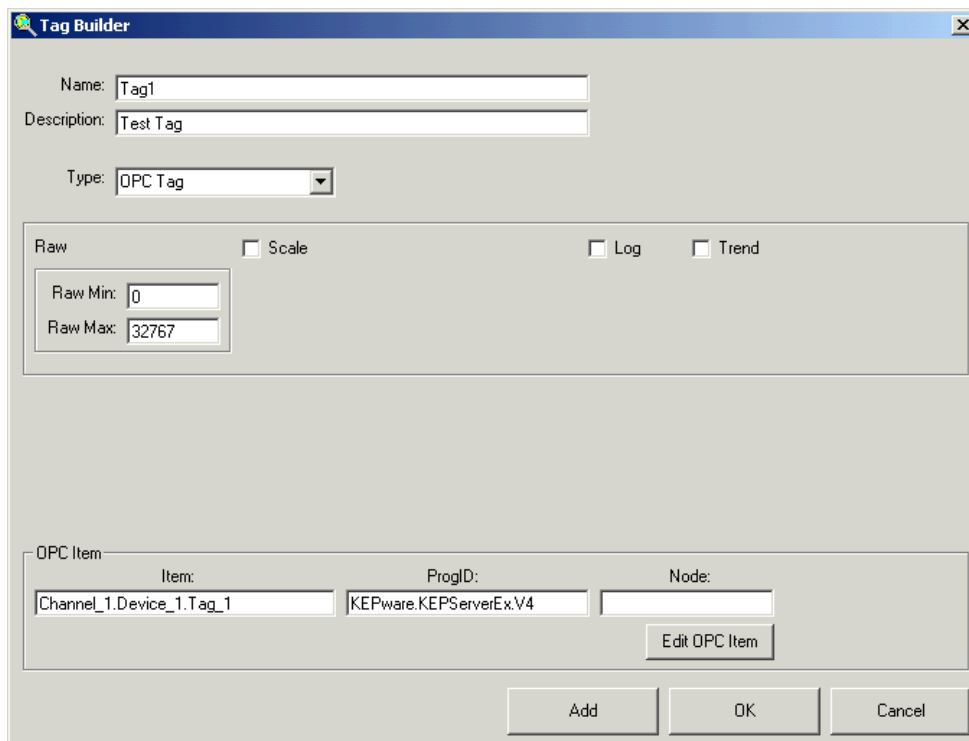
- Click Item To Select...**
- Local OPC servers**
- Network**

You should see the Program ID for KepserverEx, expanding it will cause ClearView to connect to the server and launch it if it is not all ready running. Once connected you will see folders for all the channels in the project that is loaded, we are using the SimDemo project. Expand the Channel, Device, and any subsequent Tag Group folders until you see the tag that you wish to associate with the your ClearView OPC item.



*When KepserverEx automaticall launches it will load the last project that was opened succesfully or the one that is set in the default project setting of the Tools/Options.. General Tab.*

Click on the a tag to select it. This will automatically assign the tag to the OPC item.



Click the OK button to add the new OPC tag to the ClearView Tag Database and close Tag Builder.

Enter Filter Here...

New Edit Delete Import Export Close

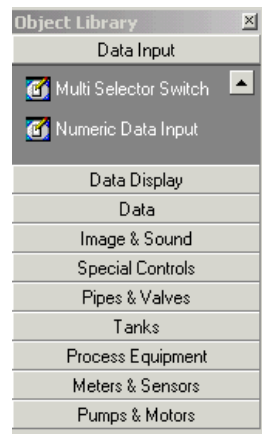
	Tag Name	Description	Tag ...	L...	T..	Event...	Eve...
▶	_SysRandom	Random integer betwe...	Varia...	<input type="checkbox"/>	<input checked="" type="checkbox"/>	<input type="checkbox"/>	0
	Sim1	0 - 59	Deriv...	<input type="checkbox"/>	<input checked="" type="checkbox"/>	<input type="checkbox"/>	0
	_SysTickMin	One shot every 1 minu...	Varia...	<input type="checkbox"/>	<input checked="" type="checkbox"/>	<input type="checkbox"/>	0
	_SysSquare	Square wave between...	Varia...	<input type="checkbox"/>	<input checked="" type="checkbox"/>	<input type="checkbox"/>	0
	Blink	Blink - rate = 1 sec	Deriv...	<input type="checkbox"/>	<input checked="" type="checkbox"/>	<input type="checkbox"/>	0
	Tag1	Test Tag	OPC ...	<input type="checkbox"/>	<input type="checkbox"/>	<input type="checkbox"/>	

Click the Close button to close Tag Database View.

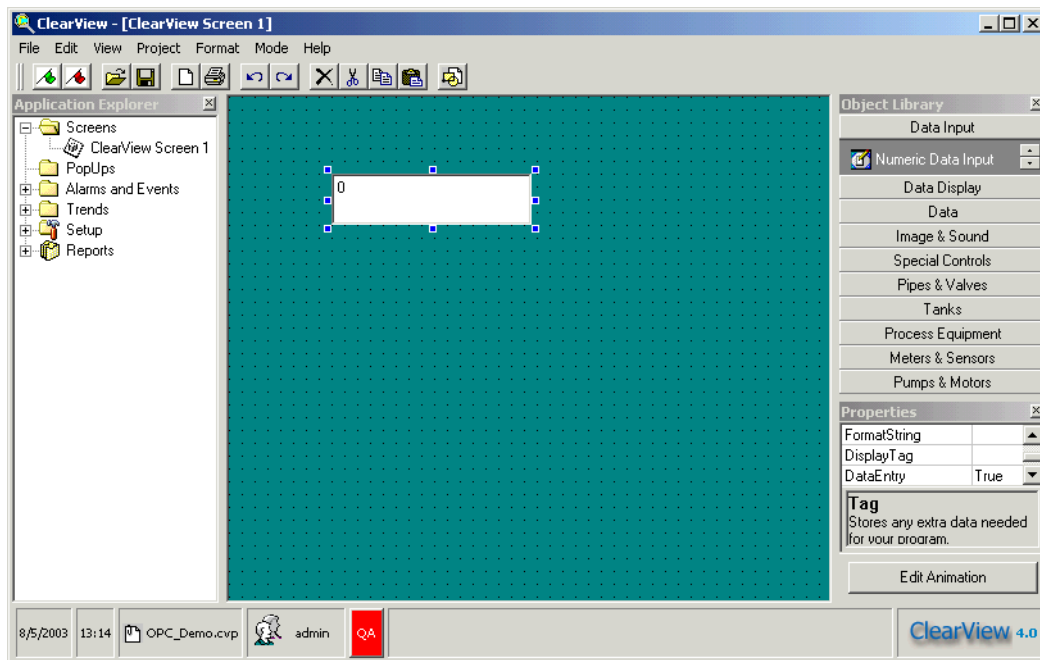
## Create a Screen

### Create a Screen to Display OPC Tag Data

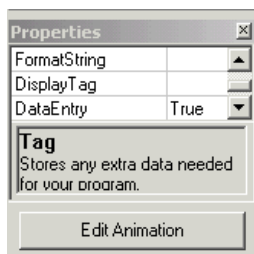
Click on the Data Input group in the Object Library window and scroll down until you see the Numeric Data Input.



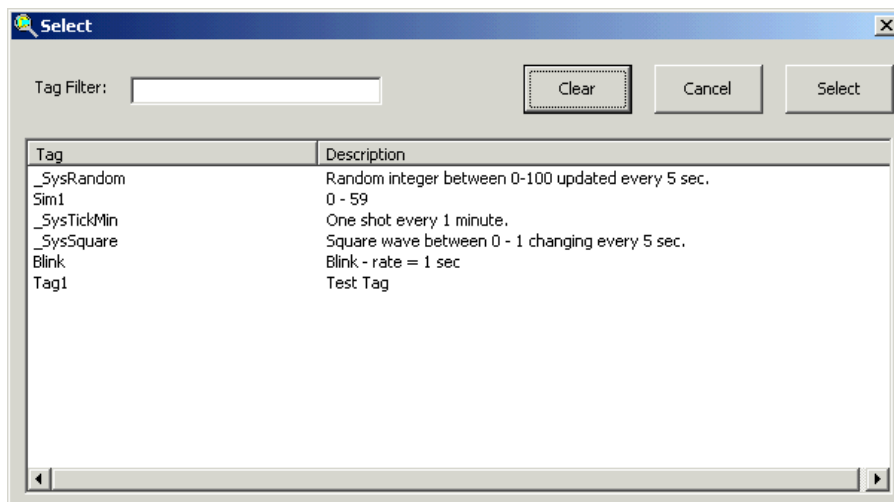
Click on Numeric Data Input to select a Numeric Data Input object. Then click with the mouse on the Green design screen and drag the cursor to create a Numeric Input Object.



Making sure that the Numeric Data Input box is still selected scroll down the properties window until you see the Display tag Property.



Click on Display Tag, this will open the Tag Database browser from which you can select a tag to display.

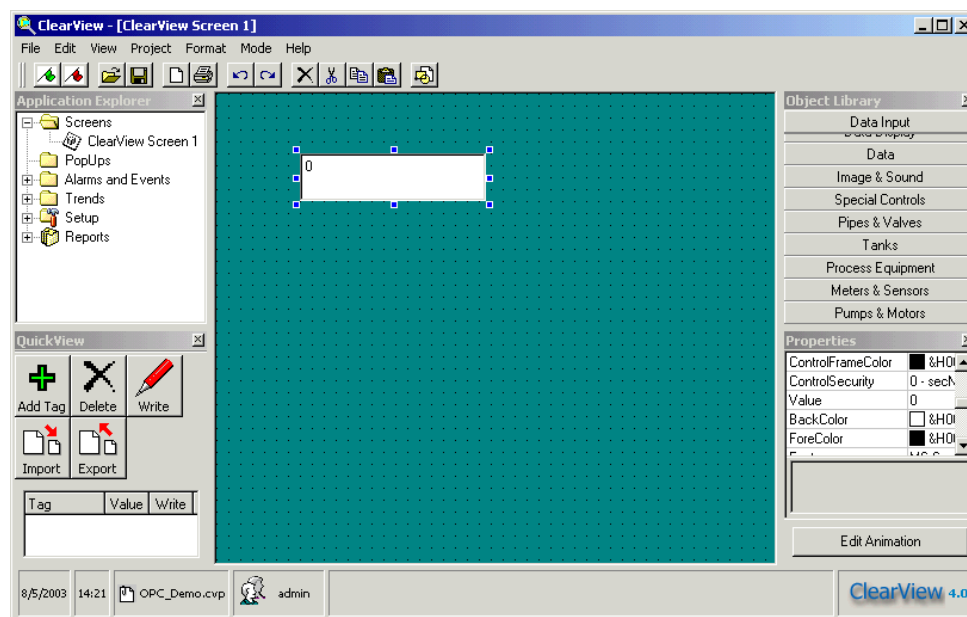


Click the tag you want in your display to highlight it and then click the Select button.

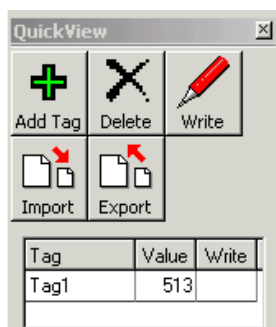
## View the Data

Click View|QuickView in the ClearView main menu to display the QuickView utility in the lower left corner of the screen

*The QuickView utility allows viewing of the specified tag value when the ClearView Server application is running.*



Click the Add Tag button in the QuickView window. Select the same tag that you chose for the Numeric Tag Input in the Select window.



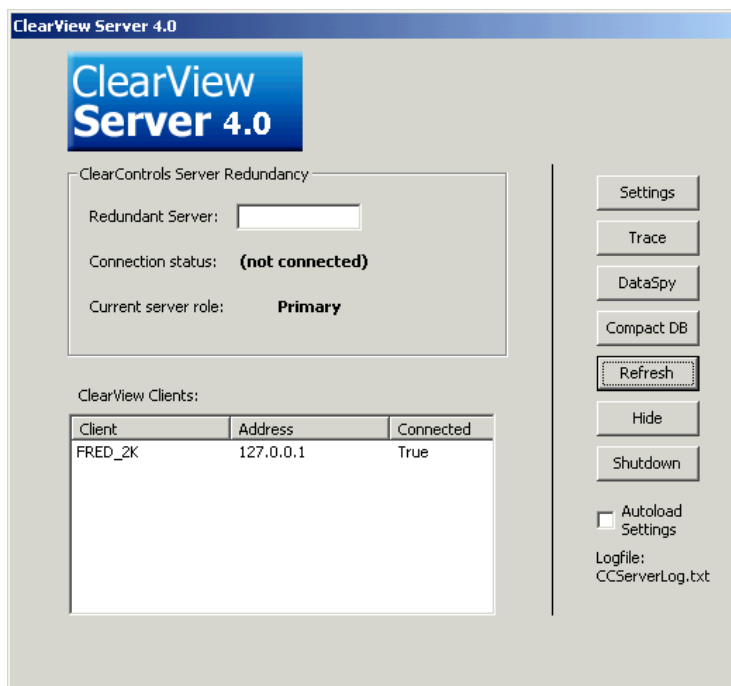
## Starting the ClearView Server

At this point, we will start the ClearView Server so that it is available to serve data to the project screens we have created in this section. Before starting the server, we will need to save our test project. It is a good idea to save the project before continuing.

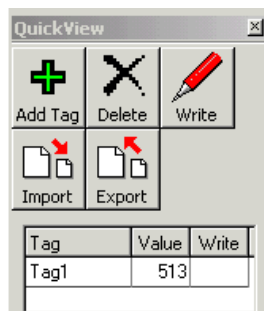
To launch the ClearView Server (CCServer) go to the Start|Programs menu. If the ClearView software is not registered you may be asked to register, if so click Evaluate and continue. Click OK at the “Please select a project file” prompt. Then select your project file from the appropriate folder.

**Note: After the ClearView Server has been launched, a server icon will be visible in the system tray.**

Double click on the ClearView Server icon to see that the server has been connected properly.



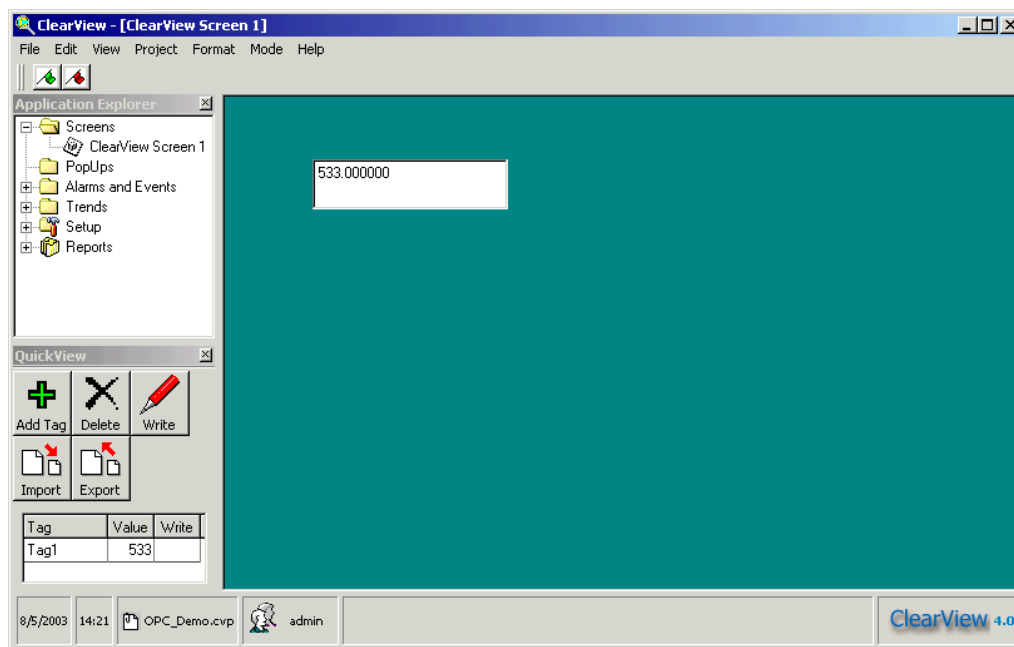
The connected status in the ClearView Server window will indicate “True” and you will notice the Tag1 values are showing in the QuickView window



Click on the Hide button to close the ClearView Server window.

## Run the Project

Now you can place the project into run mode by clicking on Mode|Design in the main menu to uncheck it. The new OPC Tag values will update in the Numeric Input Data object field.





## Using Kepware's OPC Quick Client

Kepware provides an OPC client application for testing purposes with each installation of KEPServerEX. For more information on Kepware's **OPC Quick Client**, please see the OPC Quick Client help file.